

# PRD FIREBALL 125 ENGINE

## TECHNICAL SPECIFICATIONS

### Preamble:

The following are the Technical Specifications for the PRD FIREBALL 125 engine, as approved by the Australian Karting Association.

This engine is approved for use in the following classes.

- Junior Performance
- Tag 125
- Restricted 125
- Open Performance

Unless otherwise specified, the engines must be original in all their components according to the PRD FIREBALL 125 drawings.

Any removal, addition or polishing of material is strictly forbidden.

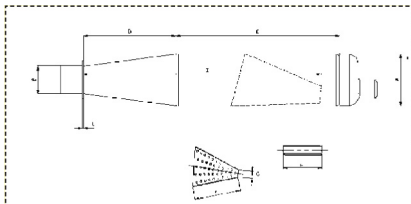
Sandblasting, glass bead blasting, peening, acid etching, spark eroding and/or any other method of metal removal or displacement is not allowed.

**ANY ALTERATIONS / MODIFICATIONS ARE STRICTLY PROHIBITED EXCEPT AS SPECIFICALLY AUTHORISED WITHIN THESE SPECIFICATIONS.**

**IF THESE SPECIFICATIONS DO NOT SAY YOU CAN MAKE A MODIFICATION, THEN YOU CANNOT.**

### PRD 1.01

Max Bore size	54.28
Max Stroke	54.004
CCV	10.0cc min
Carburetor	Tillotson 360 A, No modifications
Venturi	0.95 inch
Carburetor Bore	1.065 inch
Exhaust Height	174 deg max
Exhaust System	OEM Header only, OEM Straight PRD9037/95A or Bubble PRD9037/EVO99A Muffler No Modifications to either The addition of Exhaust Gas Temperature fitting is acceptable. Measurements: A: 100mm, B: 54mm, C: 3mm, D: 170mm, E: 315mm, F: 170mm, G: 21mm, H: 135mm, I: 455m ±1.00 mm on all Measurements

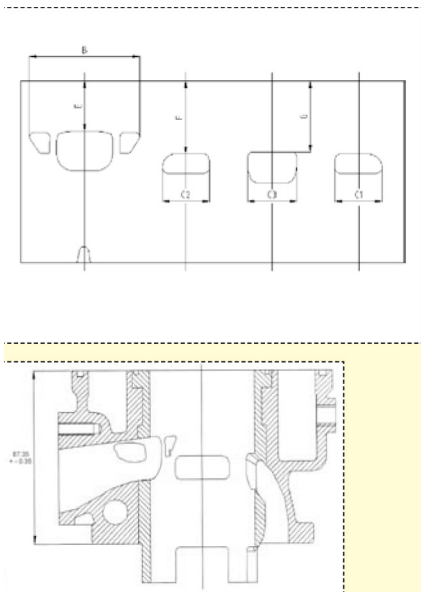


**Straight – PRD 9037/95A**

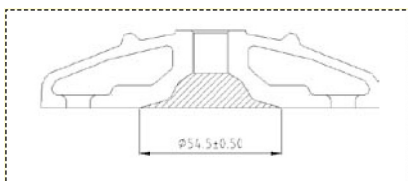
Ignition Parts	PRD or PRD/Opama All must be OEM unless specified Non-Tech or Other wise
Coatings	No coatings to engine components other than standard are permitted.

Non-Tech Items	Switches, Battery, Fasteners, spark plugs, Engine Sprocket, Water Hoses, Water Pump, Axle Pulley & O Rings No alterations from original manufacturers specification is permitted to fit a non tech item
Cylinder	Must be OEM, All ports and passages are cast finish except some pre-existing factory removal of flashing. No modifications to the ports accepted.

Chord reading	
B	65.3mm +0.10
C1=	26mm +0.10
C3	29.4mm +0.10
Angular reading by inserting a 0.2mm gauge	
E	174 dea max
F	127 dea max
G	128 dea max

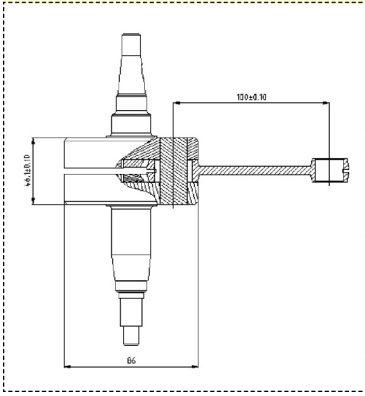


**PRD 1.02 Cylinder Head**  
Must be OEM, Modification to the cylinder head to achieve min cc's is acceptable.

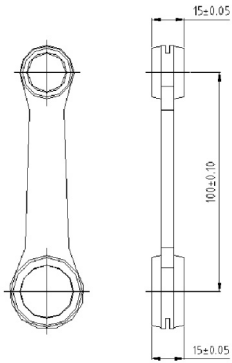


**PRD 1.03 Crankcase**  
Must be OEM with no modifications.

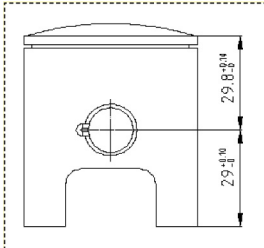
**PRD 1.04 Crankshaft** Must be OEM with no modifications.



**PRD 1.05 Conrod** Must Be OEM, PRD Medium Weight 120grams +/- 2, No Modifications

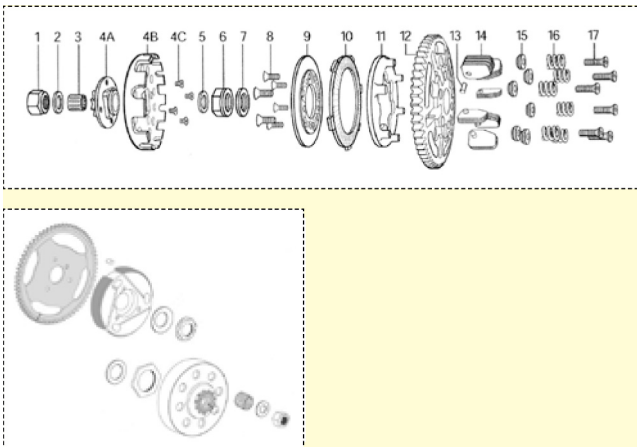


**PRD 1.06 Piston** Must be OEM, coated and uncoated pistons allowed as supplied by the manufacturer. No Modifications



**PRD 1.07 Piston Pin** Must be OEM, 10mm ID & 11mm ID PRD Piston Pins Accepted. 10mm ID piston pin to be faded out by 01/01/08

**PRD 1.08 Clutch** PRD Three Shoe Clutch or PRD/Horstman FX-100 Clutch  
PRD Light, Medium & Heavy Shoes acceptable.



**PRD 1.09 Radiator**

OEM Recommended. Core and tank size must be within 5mm of the drawing. Curved Radiators not allowed.

